



**STOP RUST,
use Galmet®**



ABOUT GALMET

The Galmet® family of metal protection products began back in 1960, from a modest office in Bridge Street, Sydney. In a short time the company's zinc rich primers and coatings, most notably Galmet® ColdGal, were established as Australia's premium anti-rust products.

Following the success of Galmet® ColdGal, an innovative rust converter, Ironize, was added to the range. By the late 1970's Galmet expanded its product range to include aerosol primers and anti-corrosive spraying enamels. These included Epoxy Rustpaint, a high performance enamel for industrial and domestic use, Spraypaint, a fast drying enamel for industrial use, and the Fence Gutter Facia range, which incorporates the latest Colorbond® colours.

Drawing from over 50 years of experience in manufacturing anti-corrosive solutions, these products are still the foundation of the Galmet range. Galmet® is still proudly made in Australia, today it is manufactured by ITW Polymers & Fluids at Wetherill Park in NSW.

The fundamental foundations of Galmet quality are still employed today in our manufacturing process. Whether the metal surface is new or requires restoration, Galmet metal protection products are your guarantee of convenience, outstanding performance, attractive versatile finishes and quality every time.

Galmet is renowned for its industrial strength coatings, paints and associated products which include:

- Galmet® ColdGal** – zinc rich paint for steel
- Galmet® DuraGal Silver** – bright silver paint for steel
- Galmet® Ironize** – rust converter and sealer
- Galmet® RustPaint** – industrial paint for steel
- Galmet® SprayPaint** – industrial general purpose spraypaint for steel
- Galmet® FGF** – Fence, Gutter, Fascia – durable steel paint in a range of Colourbond® colours suitable for touch-ups and all over coating
- Galmet® Keytite Range of Primers** – industrial application specific primers

Galmet, controlling the chemistry of corrosion



Galmet's Metal Protection range, offers **corrosion resistance**, **corrosion protection** and peace of mind which comes from improved reliability.

Galmet's **metal protection range** of anti-corrosive coatings is designed to preserve and protect both new and old metal structures and assets. Galmet offers only the very best in **zinc spray** solutions for both **galvanized steel** and **galvanized metal painting**.

The **Galmet** range will meet all your requirements, offering premium performance paints and a range of associated anti-corrosive products.

SUPERIOR PROTECTION

A wealth of knowledge from over

60 *years*
of experience

The Results

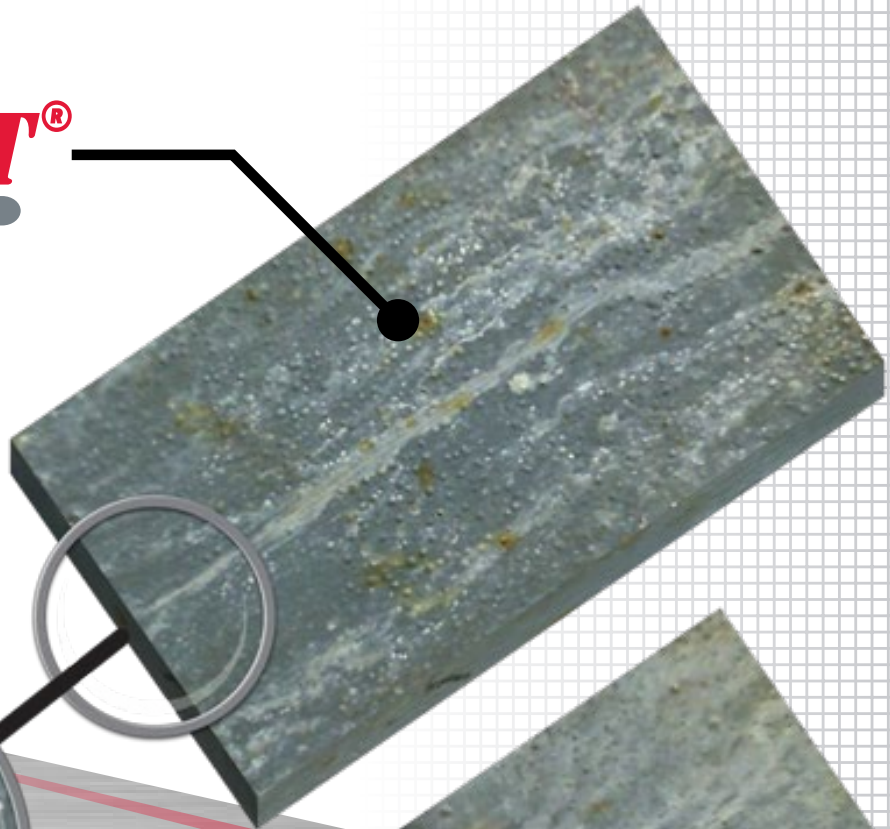
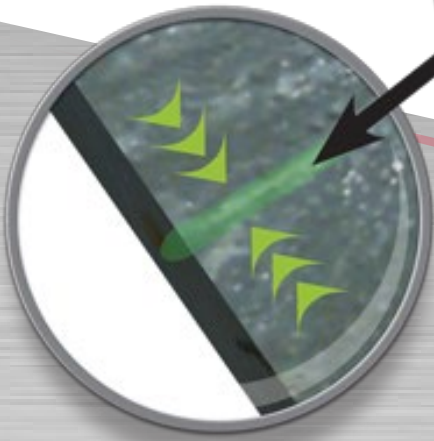
Corrosion testing to ASTM B117 salt spray shows that:

Galmet[®] ColdGal:

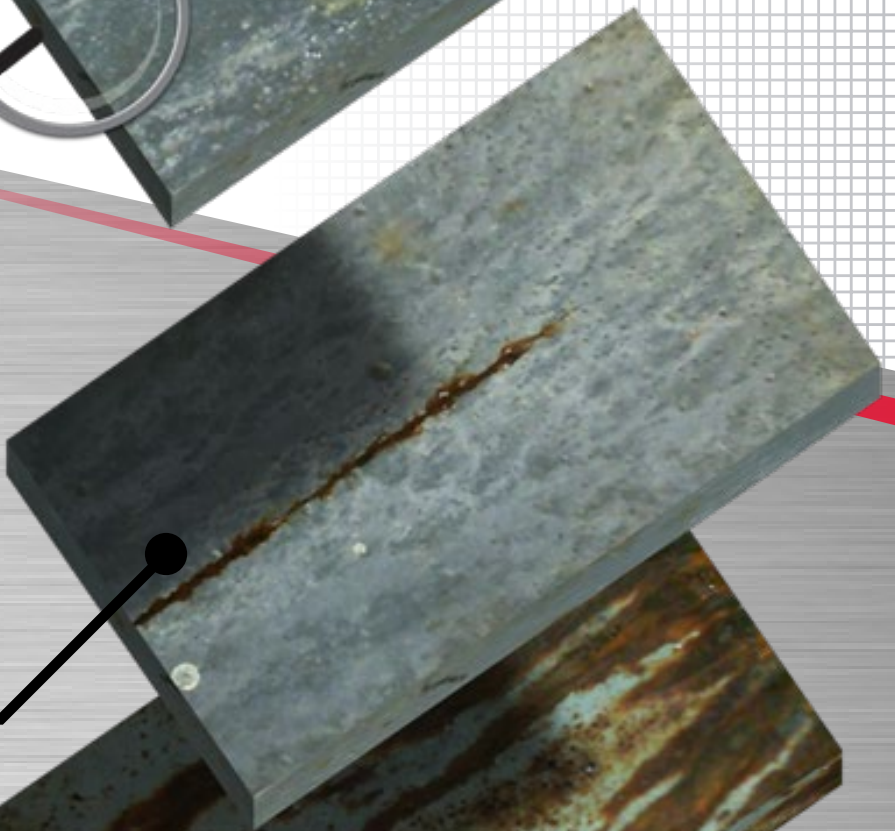
- Actively heals scratched paint film.
- Provides better protection of exposed steel under a scratched surface.
- Offers excellent prevention of rust creepage under the paint film.

GALMET[®]
METAL PROTECTION

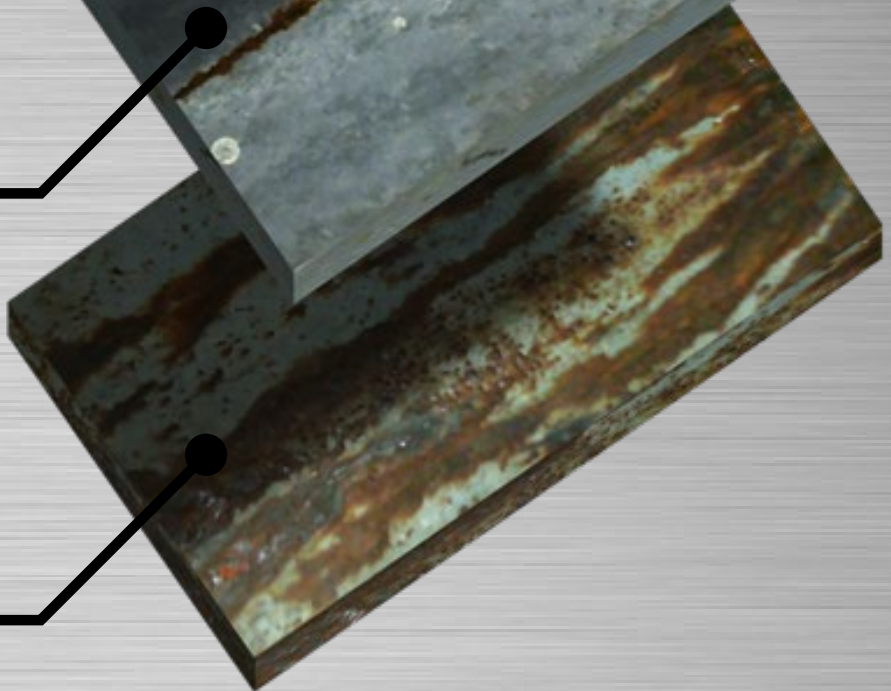
**SELF
HEALING**



**COMPETITOR
A**



**COMPETITOR
B**



Technical Data

PRODUCT	TOUCH DRY	RECOAT	THINNER FOR SPRAYING	CLEAN-UP SOLVENT	COVERAGE	AVAILABLE IN AEROSOL
Galmet® Ironize	20 minutes	3 hours (minimum)	Not recommended for spraying	Water	5-10m ² / Litre	
Galmet® ColdGal	20 minutes	8 hours	Galmet® Industrial Thinner 400D (20-25% by volume)	Galmet® Industrial Thinner 400D	7m ² / Litre	✓
Galmet® Keytite® Steel Primer	1 hour	16 hours	Galmet® Enamel Spray Thinner 300C (20-25% by volume)	Galmet® Enamel Spray Thinner 300C	12m ² / Litre	✓
Galmet® Keytite® Etch Primer	20 minutes	2 hours	Galmet® Etch Thinner 500E (20% by volume)	Galmet® Etch Thinner 500E	10m ² / Litre	✓
Galmet® RustPaint	2 hours	Within 3 to 8 hours (or after 48 hours)	Galmet® Enamel Spray Thinner 300C (20% by volume)	Galmet® Enamel Spray Thinner 300C	12m ² / Litre	✓
Galmet® SprayPaint	15 minutes	1 hour	Ready for use	Galmet® Enamel Spray Thinner 300C	Up to 2.2m ² per can	✓
Galmet® DuraGal®	6 minutes	1 hour	Ready for use	Galmet® Enamel Spray Thinner 300C	6.5m ² / Litre	✓

Corrosion Protection

Galmet® ColdGal

Galmet® ColdGal provides long term protection of steel from rust and contains 98.5% pure zinc and over 92% zinc metal pigment in the dry film.



Code	Pack Size
GGCGA	400 g (Aerosol)
GGCG250M	250 ml
GGCG500M	500 ml
GGCG1L	1 L
GGCG4L	4 L

APPLICATIONS:

- Touchup and repair of damaged hot-dip galvanizing
- Protection of welds
- Fabricated steel structures
- Suitable for MRO industrial steel applications



Galmet® DuraGal®

Galmet® DuraGal® is a bright silver coloured, aluminium rich protective coating. Formulated to provide corrosion resistance to welds and other steel products. It provides the appearance of a new DuraGal® or hot-dip galvanized surface.



Code	Pack Size
GGDSA	350 g (Aerosol)
GGDS1L	1L
GGSD4L	4 L
GGDS20L	20 L

APPLICATIONS:

- Touchup and repair of DuraGal® steel & hot-dip galvanized steel
- Pre-primed steel sections
- Use wherever a bright silver, DuraGal® like finish is required





Colours and Finishes

Galmet® RustPaint



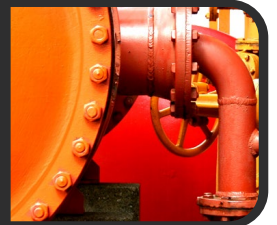
Galmet® RustPaint is an epoxy enamel with excellent adhesion to steel and tough abrasion resistance. It is specifically formulated with anti-corrosive properties to protect and beautify both new and old metal surfaces.

Pack Size

- 350 g (Aerosol)
- 1 L
- 4 L

APPLICATIONS:

- General fabrication and asset management
- Industrial machinery and equipment
- Trailers and transport industry applications
- Fences and gates



Galmet® SprayPaint



Galmet® SprayPaint is a general purpose industrial finishing coat for steel and structural assets. It is fast drying, high gloss and has excellent weathering properties.

Pack Size

- 350 g (Aerosol)

Formulated to provide a tough exterior coating to protect and beautify metal surfaces.

*extensive colours, refer to colour chart

APPLICATIONS:

- General fabrication
- Industrial machinery and equipment
- Trailers and transport industry applications
- Fences and gates
- Wrought iron and garden furniture



Galmet® Fence, Gutter, Fascia (FGF)



Galmet® Fence, Gutter, Fascia (FGF) is a durable exterior acrylic paint designed to protect and beautify metal surfaces. It is available in range of Colorbond® colours.

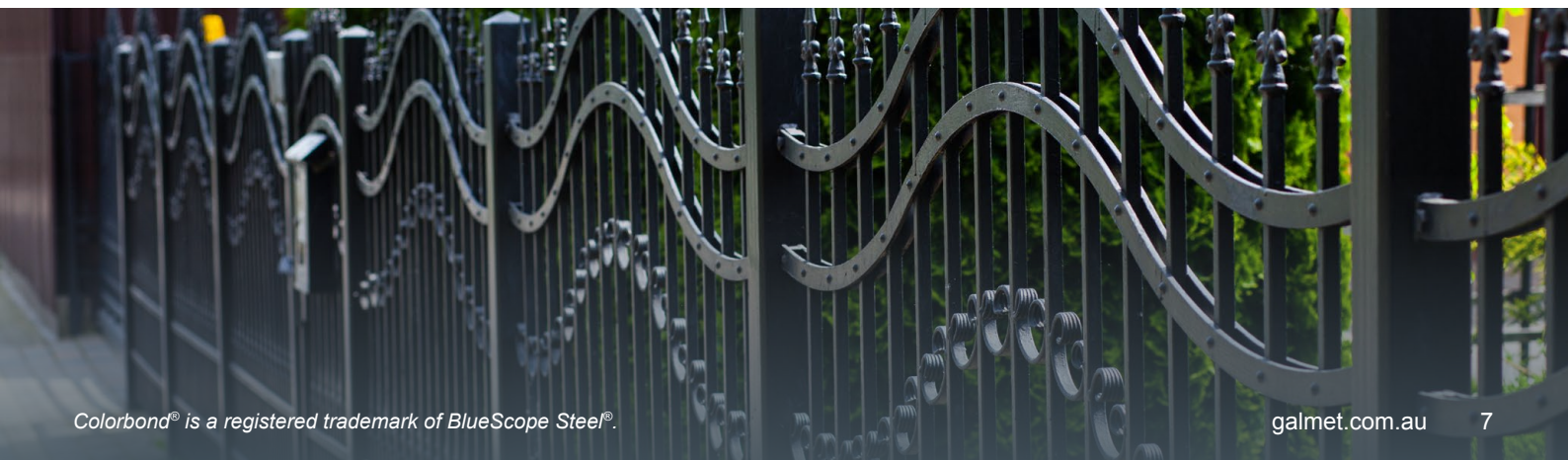
Pack Size

- 350 g (Aerosol)

*extensive colours, refer to colour chart

APPLICATIONS:

- Fascias, gutters and downpipes
- Fences and gates
- Tank exteriors
- Exterior steelwork and Colorbond® steel



Primers & Preparation

Galmet® Blue Plus®



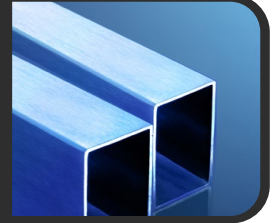
Galmet® Blue Plus® provides excellent recoatability and corrosion protection. It is fast drying and ideal for OneSteel® Blue Plus® steel tubing touchups.

Code	Pack Size
GBPA350	350 g (Aerosol)

Touchup colour of OneSteel® Blue Plus® pre-coated steel tubing.

APPLICATIONS:

- Pre-primed or bare steel sections
- Touchup of OneSteel® Blue Plus® pre-coated steel tubing
- Exterior and interior steelwork
- Highly suitable for MRO industrial steel applications



Blue Plus® is a registered trademark of OneSteel Ltd.

Galmet® Ironize™



Galmet® Ironize™ is a fast reacting rust converter and sealer which is applied directly to a rusty surface.

Code	Pack Size
GICS125M	125 ml
GICS250M	250 ml
GICS500M	500 ml
GICS1L	1 L
GICS4L	4 L

APPLICATIONS:

- Rusted steel surfaces
- Ferrous components
- Gutters & roofs
- Concrete reinforcing bars



Galmet® Industrial Primer

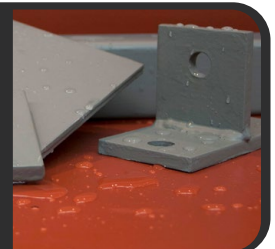


Galmet® Industrial Primer is fast drying and formulated to inhibit corrosion of steel in industrial applications.

Code	Pack Size
GGOAC4L	4 L
GROAC4L	4 L
GROAC20L	20 L

APPLICATIONS:

- Automotive, MRO and industrial applications
- Mining, utility and agricultural applications
- Construction and fabrication
- Steel beams and sections
- Fences and gates



Galmet[®] SprayPaint Primer



Galmet[®] SprayPaint Primer is a fast-dry, easy sanding primer for steel, aluminium and galvanized surfaces.

Code	Pack Size
GSPPRA350	350 g (Aerosol)
GSPGPA350	350 g (Aerosol)

APPLICATIONS:

- Primer for Galmet[®] SprayPaint
- Ferrous and non-ferrous metals
- Hot-dip galvanizing
- Aluminium and stainless steel
- General fabrication primer



Galmet[®] Keytite[®] Steel Primer



Galmet[®] Keytite[®] Steel Primer is an enamel metal primer designed to penetrate lightly rusted surfaces.

Code	Pack Size
GKSRA350	350 g (Aerosol)
GKSGA350	350 g (Aerosol)
GKSG1L	1 L
GKSG4L	4 L

APPLICATIONS:

- Steel fabrications and industrial applications
- Steel beams and sections
- Fences and gates
- Garden furniture



Galmet[®] Keytite[®] Etch Primer



Galmet[®] Keytite[®] Etch Primer is an epoxy etch primer designed to etch and passivate ferrous and non-ferrous metals and galvanized iron.

Code	Pack Size
GKEGA350	350 g (Aerosol)
GKEG1L	1 L
GKEG4L	4 L

APPLICATIONS:

- Galvanised steel
- Aluminum, alloys and copper
- Bare steel and stainless steel
- DuraGal[®] and other zinc coatings





Galmet® Enamel Spraying Thinner 300C



Galmet® Enamel Spraying Thinner 300C is a fast evaporating thinner formulated for spraying Galmet enamel coatings.

Code	Pack Size
GT300C1L	1 L
GT300C4L	4 L

APPLICATIONS:

- Suitable for thinning and clean up of:
 - Galmet® SprayPaint
 - Galmet® RustPaint
 - Galmet® Industrial Primer
 - Galmet® Keytite Steel Primer



Galmet® Etch Thinner 500E



Galmet® Etch Thinner 500E is a fast evaporating thinner with strong solvent action for spraying and clean up of Galmet products.

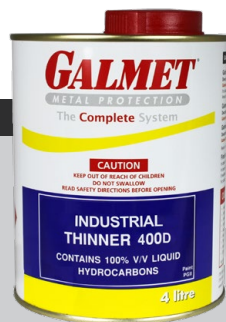
Code	Pack Size
GT500E4L	4 L

APPLICATIONS:

- Suitable for spraying of Galmet® Keytite® Etch Primer
- Cleanup of brushes and equipment
- General purpose lacquer thinner



Galmet® Industrial Thinner 400D



Galmet® Industrial Thinner 400D is a slow evaporating thinner with strong solvent action for spraying and cleaning up of Galmet® ColdGal.

Code	Pack Size
GT400D4L	4 L

APPLICATIONS:

- Suitable for spraying of Galmet® ColdGal
- Cleanup of brushes and equipment



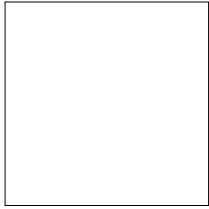


Colour Chart

Spraypaint & Rustpaint Colours

▼ Colours available in Galmet® RustPaint ★ Colours available in Galmet® SprayPaint ● Pipeline identification colours □ Safety Colours

Colours may vary slightly to what is shown in this colour card due to printing characteristics



WHITE



PEWTER GREY

N63



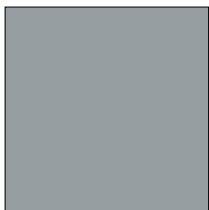
BLACK FLAT



BLACK SATIN



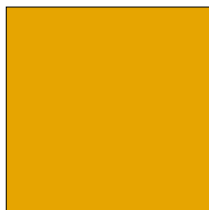
BLACK GLOSS



SILVER



OCEAN BLUE



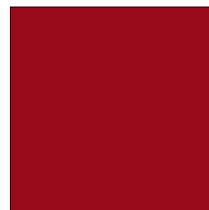
GOLDEN YELLOW

Y14

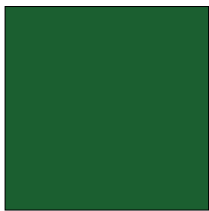


SIGNAL RED

R13



BRIGHT RED



NATURAL GREEN



EMERALD GREEN

G13



BRUNSWICK GREEN

G12



TECHNICAL INFORMATION FOR SAFETY & PIPE IDENTIFICATIONS COLOURS

SAFETY COLOURS

- B15 - Mid Blue (Fresh Water - potable)
- R13 - Signal Red (Fire Fighting)
- Y14 - Golden Yellow
 - (With Black Stripes - Dangerous Materials)
 - (With Black Trefoil - Ionizing Radiation)

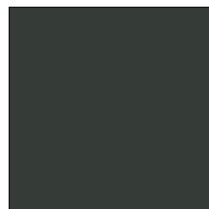
PIPE IDENTIFICATION COLOURS

- Silver (Steam)
- N61 - Black (Other Fluids)

Colorbond® Colours



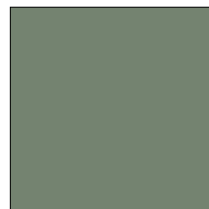
SURFMIST®
(OFF WHITE)



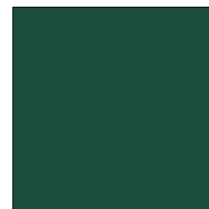
MONUMENT™



NIGHT SKY™
(EBONY)



PALE EUCALYPT™
(MIST GREEN)



COTTAGE GREEN™
(CAULFIELD GREEN)

Colorbond® is a registered trademark of BlueScope Steel®.

Note: The colours shown approximate the Colorbond® colours - Colour variation of the Galmet paint may occur due to weathering. Old names in brackets


Product Selection Chart

	New Steel	Rusted Steel	Aluminium & Galvanized Non Ferrous Metal	Previously Painted Old Surface	OneSteel DuraGal® Finish	OneSteel® Blue Plus® Tubing Finish
Galmet® Enamel Thinner 300C	Clean it	Clean it	Clean it	Clean it	Clean it	Clean it
Galmet® Ironize™		Treat it		Treat it <i>*rusted surface only</i>		
Galmet® Cold Galvanizing	Protect it				Prime it	
Galmet® Blue Plus®						Prime it
Galmet® DuraGal®					Protect & Paint	
Galmet® Primers	Prime it	Prime it	Prime it	Prime it		
Galmet® Top Coats	Paint it	Paint it	Paint it	Paint it		

DuraGal® is a registered trademark of OneSteel®.

CLEAN

A thorough surface clean is imperative for an optimum result. Use wire brush & Galmet Enamel Thinner 300C.




PROTECT

Protect steel from rust with an anti-corrosive paint layer.
*Galmet DuraGal® is a self priming aluminium rich silver coloured topcoat.



TREAT

Rust converters should be used where it is impossible to remove rust by abrading.
*Use Ironize™ only on rusted surfaces, refer to the TDS.



PRIME

Application specific primers ensure optimum adhesion of top-coats to steel.



PAINT

A complete range of steel specific top-coating solutions.

